

# BM T 250

Borum City

## Basic equipment:

### Engine

Water-cooled, 4-cylinder diesel engine, 2197 cm<sup>3</sup>.  
36 kW (49 HP) at 2800 rpm.

### Compressor

Oil-cooled screw compressor.  
Total 1800 L/min. at 10 bar. Air safety valve with silencer.

### Chassis

Stable double profile frame construction.  
Engine, compressor and hydraulic pump are mounted in one unit on vibration dampers.

### Transmission

Hydrostatic, infinitely variable transmission 0-15 Km/h.

### Hydraulic pump

Hydraulic piston pump with integrated servo control 25 cm<sup>3</sup>.

### Wheel motors

### Piston motors with integrated parking brake.

### Hydraulic oil tank

40 Litres.

### Diesel oil tank

50 Litres.

### Bead tank

Bead capacity 55 L/95 kg.

### Driver's seat

The control panel, pneumatic section, electronics, steering wheel and instruments are connected to the driver's seat.

### Instrument panel

Switches for driving lights, warning lights and magnetic valves for pressure release.

### Electrical system

12 V/85 Amp system. Warning lights, rear lights, front lights, battery and relays.

### Guide rod

Stabilised against vibrations and adjustable in all directions.  
Easy handling.

### Bonnet

Easy access for service.

### Paint

Standard: RAL 1007.

## Extruder equipment:

### Thermoplastic tank

250 L tank indirectly heated by heat transfer oil. Vertical mixer with top foundation and bearings. Thermostatically controlled oil and material

temperature.

### Agitator transmission

Hydraulic transmission with motor, shaft, safety valve and on/off valve. Reversible mixer.

### Burner system

Diesel oil burner or alternatively Propane burner

### Heat transfer oil pump

Hydraulically driven.

### Extruder drive

Hydraulic motor with hose system and electronically controlled dose valve with integrated safety valve system.

### Thermoplastic extruder

Thermoplastic extruder ranging from 20-50 cm fitted with 5 cm or 10 cm standard valves. (Special dimensions can be supplied on request).

The transport of material from tank to extruder is done by a hydraulically driven screw pump. The screw pump has a permanent thermoplastic re-circulation system which ensures a constant flow past the extrusion valves when material is not being extruded.

The extruder valves are cylindrical to achieve maximum working frequency when profiled markings are extruded, and they are mounted with interior hot-oil heating.

### Quick cleaning

Pneumatically controlled quick cleaning system for the removal of solids left in the extrusion slot. Can be activated while extrusion is in process and is only slightly detectable on the line in the form of a moderate thickening of layer.

### Extruder lifting cylinder

Adjustment of extruder height from driver's seat. Pneumatic lifting cylinder, controlled from drivers seat.

## Options:

### Electronic skip-line control BM UNI-LINE-EUR 1

For up to 3 paint guns and 3 bead guns. The waterproof control panel is equipped with raised buttons and each button has its own symbol for easy operation. 10 markings can be pre-programmed. Automatic, semi-automatic and manual operation. Automatic remarking correction of cycle start and stop. Display for line length and gap, road speed, working hours and total marking distance. Optional remote start/stop function.

### Bead gun system

Please see brochure on guns.

### Gauges

For oil pressure.  
For water temperature.  
For diesel oil.

### Working hour counter

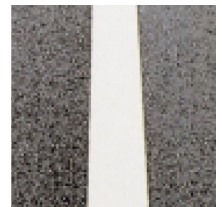
### Premark system

Electronically controlled premark system with telescopic foundation and ground distance wheel.

### Dimensions + weight

Incl. equipment.  
L: 3150 mm.  
W: 1690 mm.  
H: 2400 mm  
incl. rotating light.  
Weight: 2340 kg.

Modification rights reserved.



– it's straightforward